

# Facilities Discussion

February 1, 2021

# Referendum Calculators

[Referendum Calculator Excel](#)

[Referendum Calculator Sheets](#)

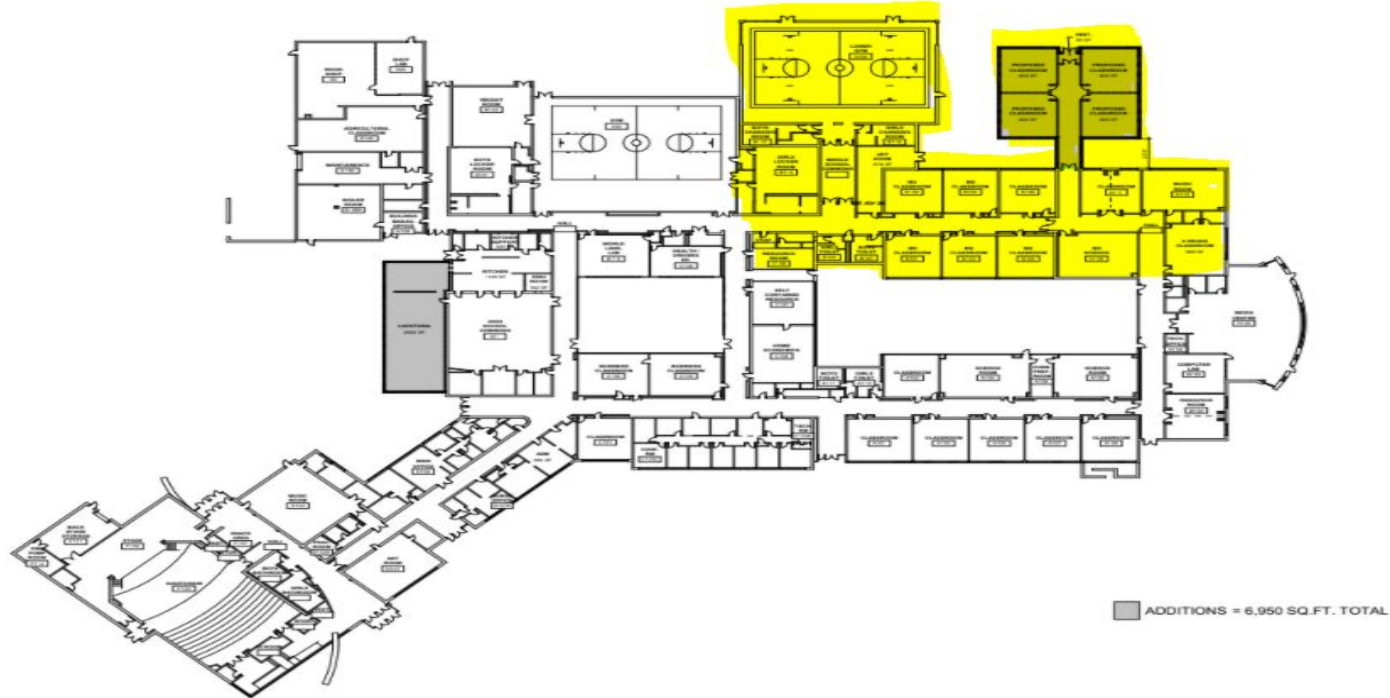
[Tutorial Video](#)

# Moving the 6th graders to the middle/high school campus

- We could run two separate schedules for the middle school and high school students.
- They would be on different bell schedules and not in the hallway at the same time.
- We could have a separate entrance to the building for the middle school students.
- They would eat lunch in the cafeteria when the high school students were in class.
- We could consider expanding the cafeteria.
- With this model we would have middle school teachers and high school teachers. Currently we have a lot of cross-over.
  - This would allow us to expand our AP offerings at the high school level.
  - This is important based on the changes coming to the SAT
    - Changes to the SAT - *“AP provides a much richer and more flexible way for students to distinguish themselves,” Coleman said. The wide availability of AP programs, he said, make subject tests less necessary. More than 1.2 million students in the high school Class of 2019 took at least one AP test.”*

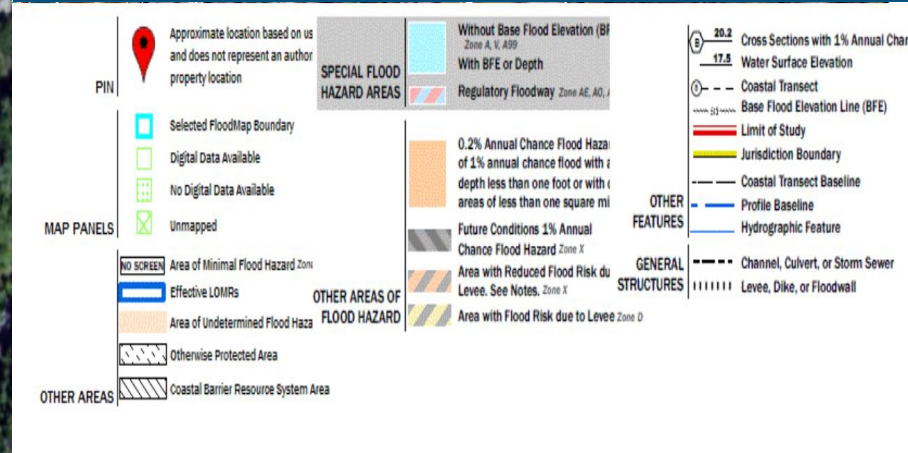
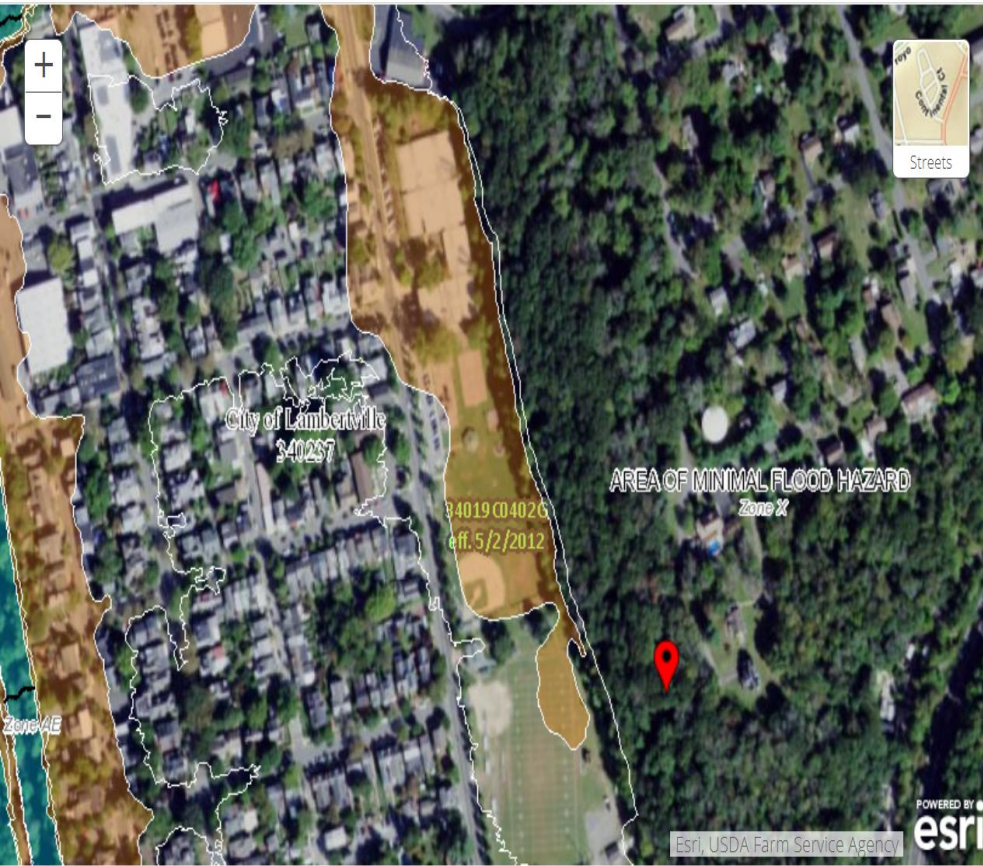
# Middle School Area of the Building

The areas in yellow would be used for the middle school and the rest for the high school. The middle school area has science labs, gym, art and music rooms, classrooms, and bathrooms.

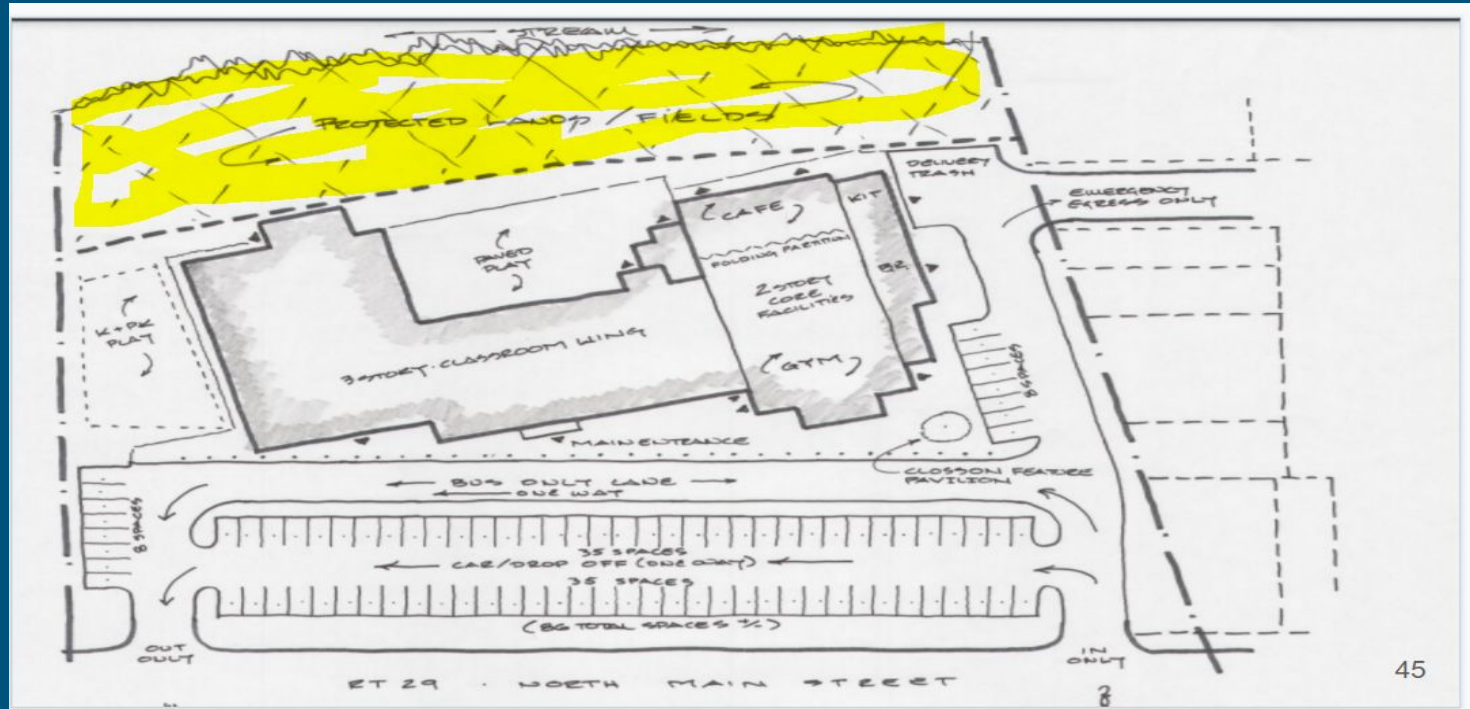


# Meeting with the DEP

## 1/26/21



- We originally planned on leaving 100 feet from the stream natural and unusable for student play.
- The DEP felt as though we might only have to leave about 25 feet natural and the remainder could be used as a play area for students. The final determination would be made during their evaluation process.





# Combined School in West Amwell

- Our architect and engineer did some more research about the possibility of a combined school in West Amwell on the middle/high school site.
- A well for water would need to produce approximately 12-15 gallons per minute in order to have a combined school (state uses a calculation based on the number of students and staff)
- The new school would need to have a sprinkler system by code which might require even more than 12-15 gallons per minute.
- We dug an almost 400 foot well (below with red circle) back in September to use for irrigation of the new soccer field and football field. That well is only generating 5-6 gallons per minute.
- A test well on the site for a combined school would cost approximately \$50,000 to dig.



# Other items from 1/25

- Working on setting up an on site meeting with the neighbors on North Franklin Street.
- Working on setting up a meeting with neighbors on North Main Street, Delaware, and Jefferson.
- We reached out to the fire chief in Lambertville and he was not concerned about the three story school in Lambertville.
- Putting the parking lot behind the building could have an impact on North Franklin Street with run-off.
  - Also a security concern with having the school so close to the road.
- Potential cost savings on staffing with a combined school
  - 6 teaching positions - \$57,010 (BA Step 1 ) + benefits (\$20,000)
  - 3 special area teaching positions - same as above
    - \$693,090
  - Energy savings \$100,000
- Total estimated savings: \$793,090



# Upcoming Open Zoom Meetings

**Wednesday, February 3 at 7 pm**

Join Zoom Meeting

<https://zoom.us/j/97149542865?pwd=ZTUxbnZkSnY0Ni9VSUdFRGxiWXIMUT09>

Meeting ID: 971 4954 2865

Passcode: 5nj28d

**Tuesday, February 9: 9 am**

Join Zoom Meeting

<https://zoom.us/j/99285079457?pwd=anZQMw9KwTh0bGNhK0M2Njc2OGZ4QT09>

Meeting ID: 992 8507 9457

Passcode: Hdka3D

# Upcoming Open Zoom Meetings

**Tuesday, February 9 at 7 pm**

Join Zoom Meeting

<https://zoom.us/j/96629568947?pwd=cmNTRTI2SnZoUGppU3BHcWdnMkpZUT09>

Meeting ID: 966 2956 8947

Passcode: pahA6i

**Thursday, February 18: 7 pm**

Join Zoom Meeting

<https://zoom.us/j/91870895936?pwd=eWFwN2R1aEpFaFFqVkEyRjRmYXQzQT09>

Meeting ID: 918 7089 5936

Passcode: LEx7Vn